



BIOTECHNOLOGY & LIFE SCIENCES

Texas has a dynamic biotechnology marketplace with an estimated annual economic impact of \$75 billion. A significant number of top global biotechnology companies have Texas locations, underscoring the state's vitality in this industry. In 2013, one out of every 15 U.S. biotechnology establishments was located in Texas.



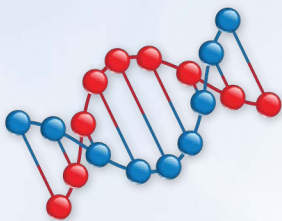
Texas is home to over 3,500 firms involved in R&D and biotechnology manufacturing.



More than 89,600 workers are employed in the biotech-related sector in Texas with an average annual salary over \$73,443.



Texas is a top state for doctorates awarded in agricultural sciences and natural resources, biological and biomedical sciences, health sciences, and life sciences.



The Texas Medical Center in Houston is the world's largest medical center and conducts \$3.4 billion in research each year.



From 2007 to 2012, venture capitalists invested \$1.4 billion in 161 biotech and medical device deals.



In 2013, U.S. News & World Report named M.D. Anderson Top U.S. Cancer Hospital for the 7th consecutive year.

Education, Research, and Development

Texas universities and other educational institutions are heavily invested in research and development (R&D). In 2012, state expenditures for R&D at higher educational institutions exceeded \$3.7 billion, according to the Texas Higher Education Coordinating Board.

Biotechnology & Life Sciences Education R&D Programs

- ★ Baylor College of Medicine - one of U.S. News & World Report's top 25 medical schools
- ★ Texas A&M University - Institute for Innovative Therapeutics
- ★ The University of Texas - MD Anderson Cancer Center, Health Science Center at Houston, and Medical Branch at Galveston - One of the nation's 11 federal Regional Centers of Excellence for Biodefense and Emerging Infectious Diseases Research

Industry Private Workforce Averages

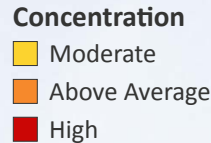
Texas' superior workforce, vibrant economy, and excellent business climate, along with the state's central location, relatively low production costs, and incentive funding have lured many U.S. and foreign business to expand or relocate in Texas.

Industry	Industry Code	Firms	Jobs	Annual Wage
Other Basic Organic Chemical Mfg	32519	105	7,366	\$ 114,254
Agricultural Chemical Mfg	3253	110	3,096	\$ 85,477
Pharmaceutical & Medicine Mfg	3254	155	9,930	\$ 105,582
Electromedical Apparatus Mfg	334510	57	2,039	\$ 92,026
Analytical Laboratory Instruments Mfg	334516	32	1,534	\$ 80,434
Medical Equipment & Supplies Mfg	3391	727	11,519	\$ 50,573
Testing Laboratories	54138	840	14,974	\$ 67,261
Biotechnology R&D	541711	353	4,485	\$ 105,097
Physical, Engineering & Life Sciences R&D	541712	687	15,657	\$ 89,997
Medical & Diagnostic Labs	6215	1,242	18,307	\$ 54,851

Source: U.S. Bureau of Labor Statistics (2012)

Regional Industry Workforce Concentration

The maps below identify the regions with above-average workforce concentrations in each industry relative to the size of the local labor force. Industry clusters can lead to the development of a skilled labor force, as well as attract business expansions or relocations to that region.



Medical Equipment & Supplies Manufacturing



Pharmaceutical & Medicine Manufacturing



Specialized Hospitals



Scientific Research & Development Services



Medical & Diagnostic Laboratories

Select Companies in Texas



Johnson & Johnson

GRIFOLS



Alcon



ALLERGAN



PPD

Luminex

