



AEROSPACE, AVIATION & DEFENSE

Texas is one of the most important locations for the global aerospace and aviation industry in the nation. As home to two international airlines, two of the world's busiest airports, 15 active military bases, and NASA's world-famous Johnson Space Center, Texas is a key location for many of the largest global aerospace and aviation companies.



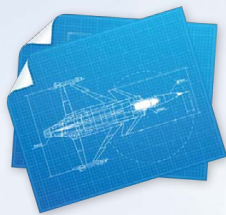
The aerospace and aviation industry directly employs over 153,000 Texas workers at 1,300 firms.



Average annual income for an aerospace and aviation industry employee in Texas is \$80,958.



Texas is home to 15 active military bases and 250,874 personnel, which have a \$150 billion impact on the state economy.



Texas is one of the top three states for aerospace manufacturing jobs.



NASA's Lyndon B. Johnson Space Center in Houston serves as the home for the human space flight program.



Texas is home to six of the 50 busiest airports in the country by passengers boarded.

Education, Research, and Development

Texas universities and other educational institutions are heavily invested in research and development (R&D). In 2012, state expenditures for R&D at higher educational institutions exceeded \$3.7 billion, according to the Texas Higher Education Coordinating Board.

Aerospace, Aviation & Defense Education and R&D Programs

- ★ Rice University - Department of Mechanical Engineering
- ★ Texas A&M University - Department of Aerospace Engineering
- ★ The University of Texas at Austin - Department of Aerospace Engineering
- ★ Texas State Technical College - Single largest provider of aerospace programs in Texas

Industry Private Workforce Averages

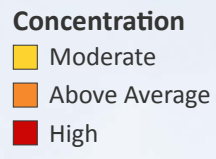
Texas' superior workforce, vibrant economy, and excellent business climate, along with the state's central location, relatively low production costs, and incentive funding have lured many U.S. and foreign business to expand or relocate in Texas.

Industry	Industry Code	Firms	Jobs	Annual Wage
Air Transportation	481	481	61,010	\$ 71,548
Support Activities for Air Transport	4881	650	20,863	\$ 57,006
Search, Detection & Nav. Instruments	334511	50	7,406	\$ 101,742
Aircraft Mfg	336411	89	32,518	\$ 94,658
Aircraft Engines & Engine Parts	336412	50	4,909	\$ 58,864
Other Aircraft Parts & Equipment	336413	82	8,968	\$ 82,930
Satellite Telecommunications	517410	55	692	\$ 89,239
Flight Training	611512	103	2,969	\$ 58,651

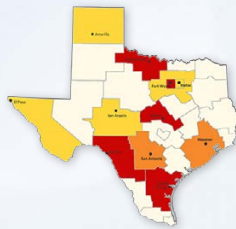
Source: U.S. Bureau of Labor Statistics (2012)

Regional Industry Workforce Concentration

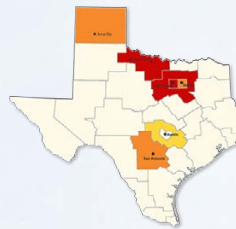
The maps below identify the regions with above-average workforce concentrations in each industry relative to the size of the local labor force. Industry clusters can lead to the development of a skilled labor force, as well as attract business expansions or relocations to that region.



Air Transportation



Support Activities for Air Transport



Aerospace Product & Parts Manufacturing

Select Companies in Texas

