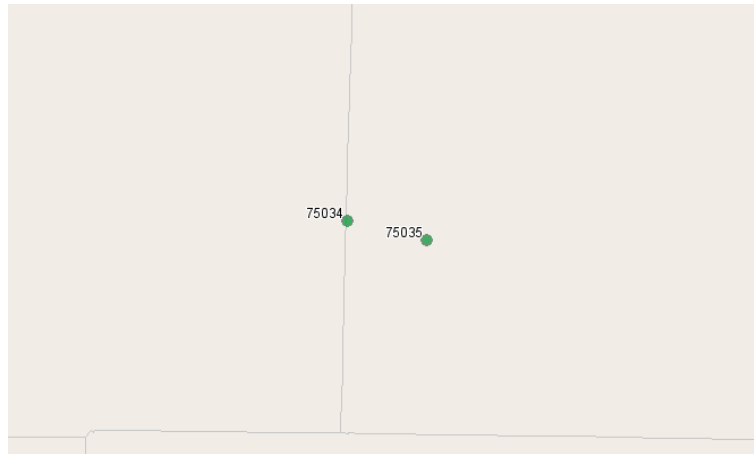


WorkForce Solutions for North Central Texas

1713 W Louisiana St.
McKinney, Texas 75070
972.542.3381 x3112

Growth Report

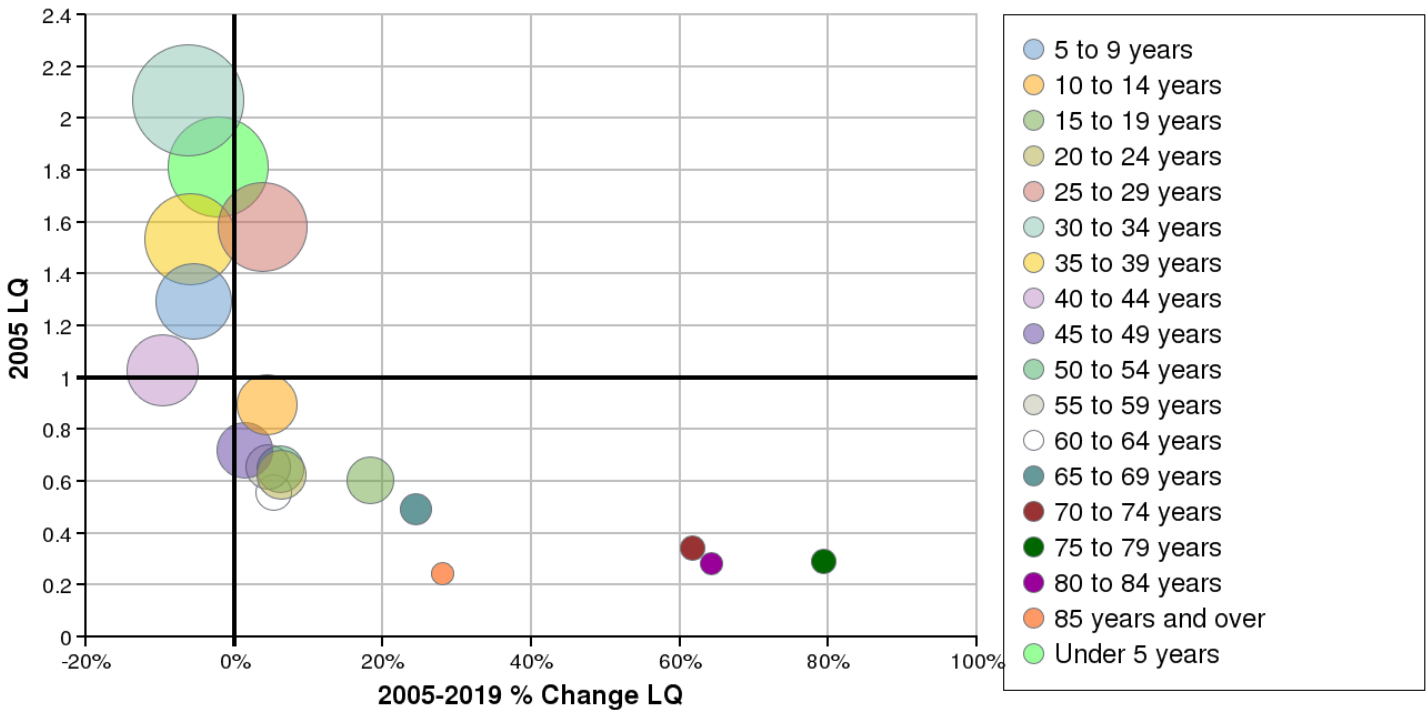
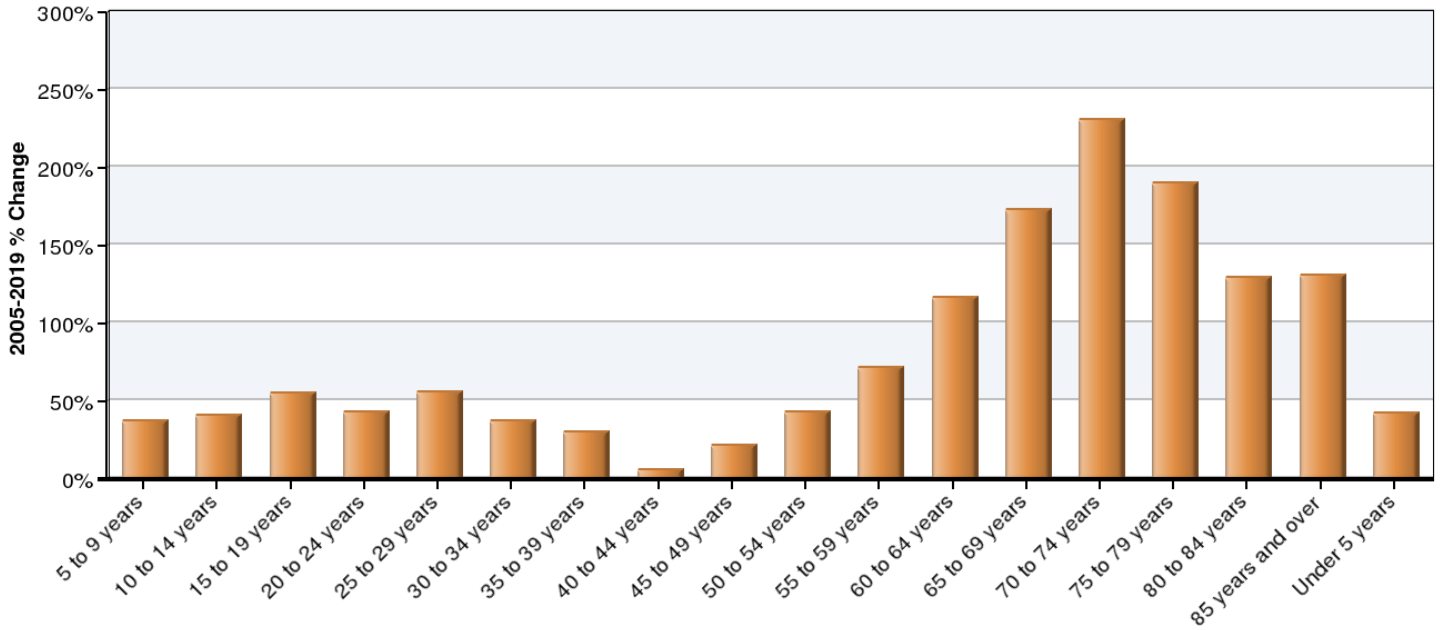


Region Info

Region: Frisco ZIPs

ZIP Areas: 75034 (in Denton county, Texas), 75035 (in Collin county, Texas)

Growth by Age

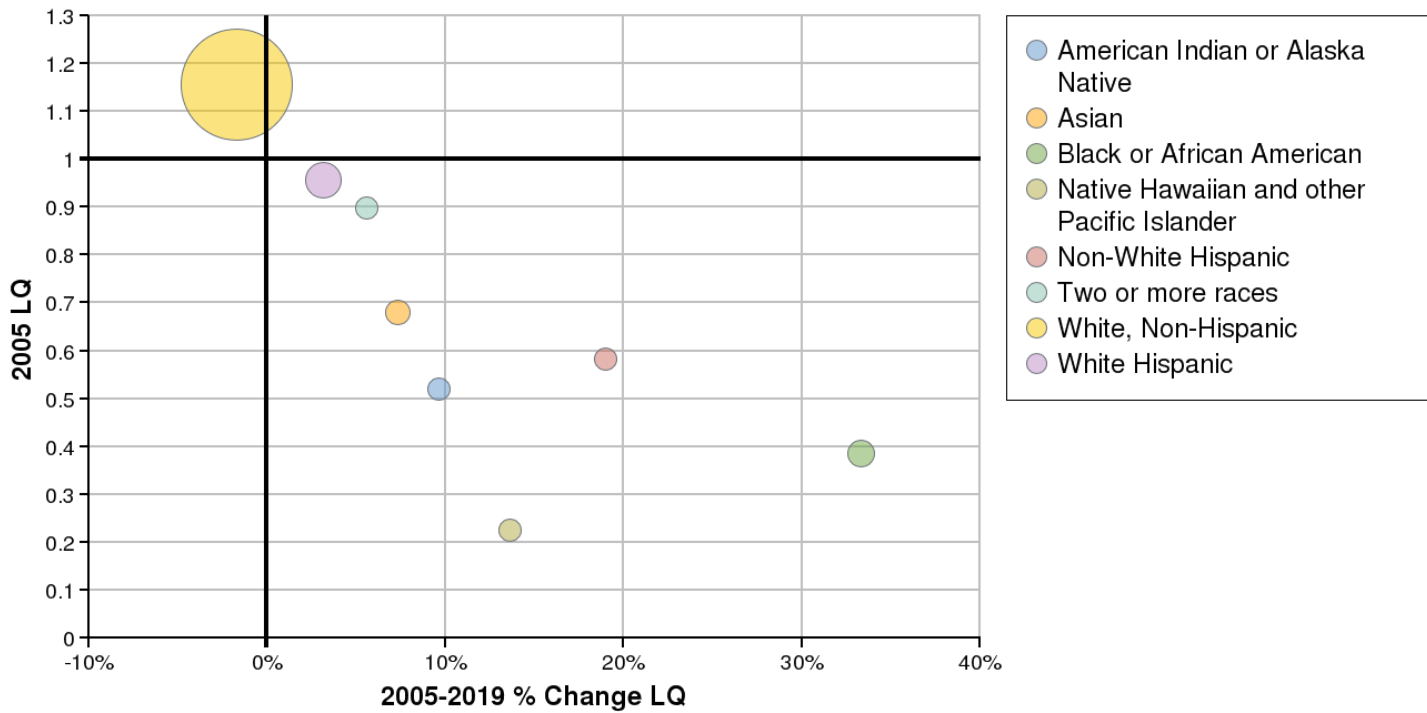
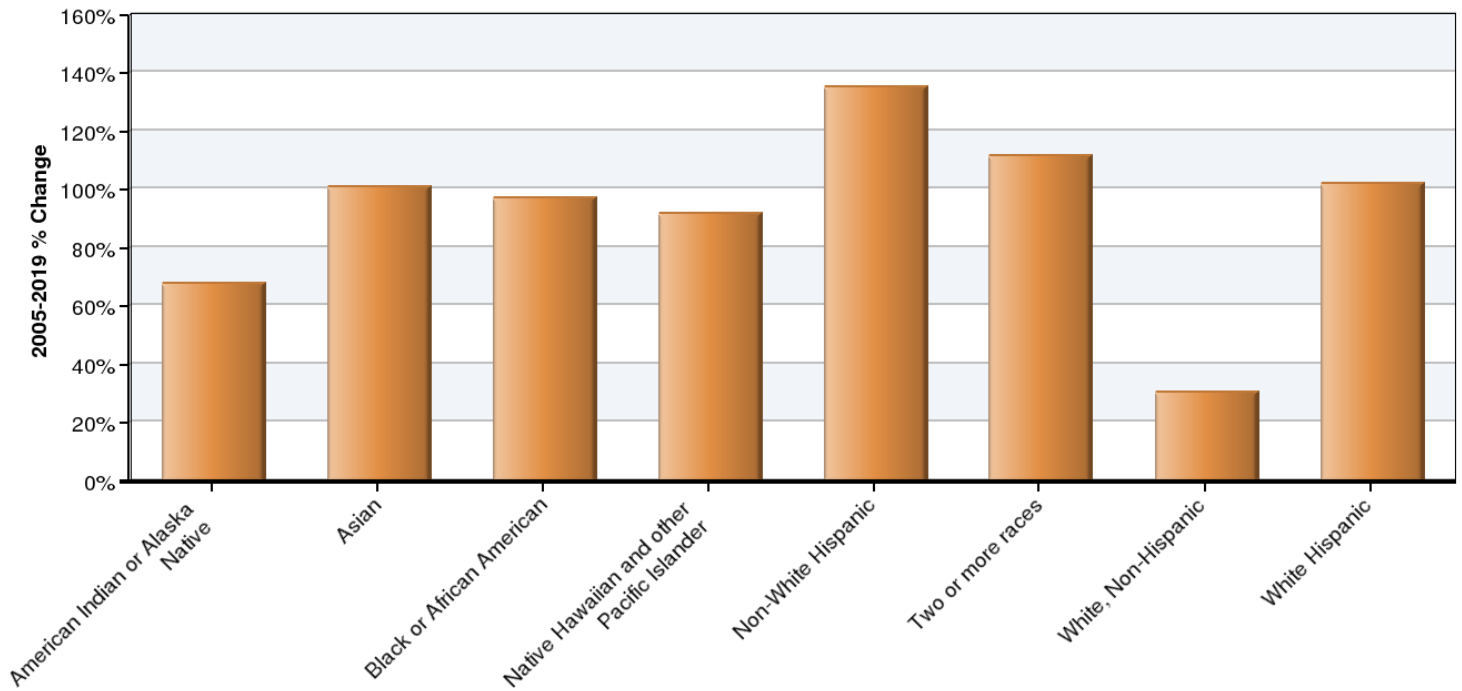


Age	2005 Population	2019 Population	Change	% Change	Nat LQ 2005	Nat LQ % Change
5 to 9 years	3,239	4,446	1,207	37%	1.29	-5%
10 to 14 years	2,398	3,375	977	41%	0.90	4%
15 to 19 years	1,632	2,527	895	55%	0.60	18%
20 to 24 years	1,682	2,408	726	43%	0.63	6%
25 to 29 years	4,043	6,308	2,265	56%	1.58	4%

30 to 34 years	5,310	7,283	1,973	37%	2.07	-6%
35 to 39 years	4,122	5,371	1,249	30%	1.53	-6%
40 to 44 years	3,020	3,200	180	6%	1.03	-10%
45 to 49 years	2,082	2,529	447	21%	0.72	1%
50 to 54 years	1,667	2,383	716	43%	0.65	6%
55 to 59 years	1,464	2,513	1,049	72%	0.66	5%
60 to 64 years	934	2,019	1,085	116%	0.56	5%
65 to 69 years	644	1,755	1,111	173%	0.49	24%
70 to 74 years	375	1,241	866	231%	0.34	62%
75 to 79 years	277	804	527	190%	0.29	79%
80 to 84 years	204	468	264	129%	0.28	64%
85 years and over	160	369	209	131%	0.25	28%
Under 5 years	4,734	6,724	1,990	42%	1.81	-2%

Source: EMSI Complete Employment - 4th Quarter 2009

Growth by Race/Ethnicity



Race/Ethnicity	2005 Population	2019 Population	Change	% Change	Nat LQ 2005	Nat LQ % Change
American Indian or Alaska Native	150	252	102	68%	0.52	10%
Asian	1,069	2,148	1,079	101%	0.68	7%
Black or African American	1,789	3,525	1,736	97%	0.39	33%
Native Hawaiian and other Pacific Islander	12	23	11	92%	0.22	14%
Non-White Hispanic	205	482	277	135%	0.58	19%

Two or more races	539	1,141	602	112%	0.90	6%
White, Non-Hispanic	29,407	38,423	9,016	31%	1.16	-2%
White Hispanic	4,815	9,728	4,913	102%	0.96	3%

Source: EMSI Complete Employment - 4th Quarter 2009

Data Sources and Calculations

Demographic Data

The demographic data in this report is compiled from several sources using a specialized process. Sources include US Census Bureau annual estimates, birth and mortality rates from the US Health Department, and projected regional job growth.

Location Quotient

Location quotient (LQ) is a way of quantifying how concentrated a particular industry, cluster, occupation, or demographic group is in a region as compared to the nation. It can reveal what makes a particular region unique in comparison to the national average.

State Data Sources

This report uses state data from the following agencies: Texas Workforce Commission.